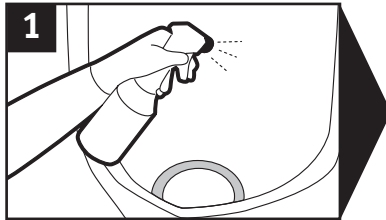
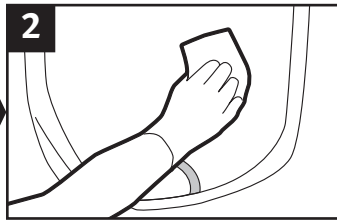


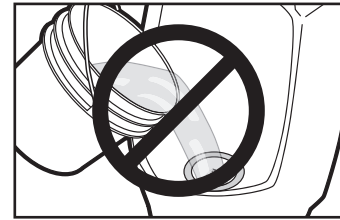
## Cleaning



1 Spray (mist) Falcon-recommended cleaner\* on the entire bowl and wipe outside then the inside.



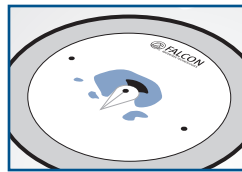
2 Wipe clean the entire outside and inside of bowl.



Never dump cleaning solutions or other liquids into bowl.

## When Should a Cartridge Be Changed?

Blue sealant appears on top of the cartridge



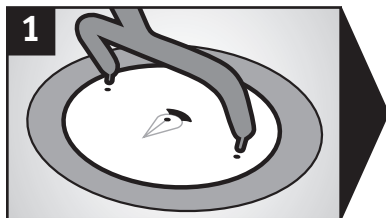
OR

Fluid flows very slowly into the cartridge

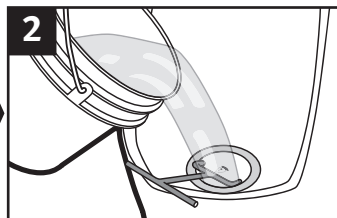
OR

Fluid does not drain into the cartridge

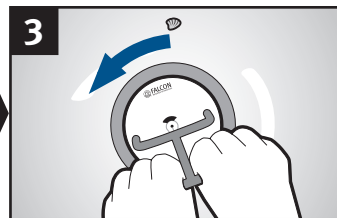
## Cartridge Change



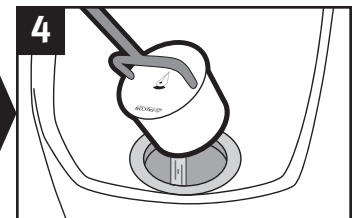
1 Insert key into cartridge.



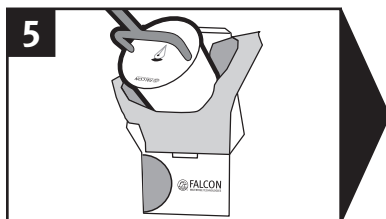
2 Pour 1 gallon (4 litres) of soapy water into cartridge to displace urine.



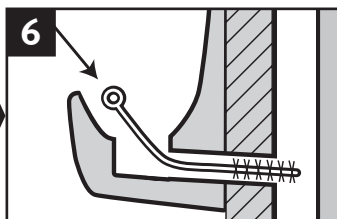
3 Turn key to left to unlock.



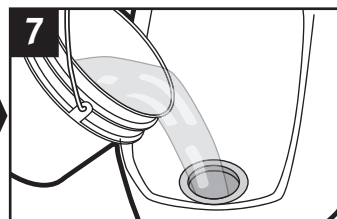
4 Lift and tilt cartridge to drain all free liquids.



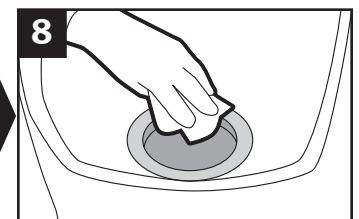
5 Place cartridge into bag, tie bag to seal and dispose.



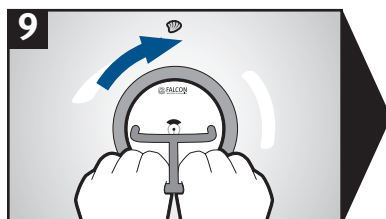
6 Scrub the housing and deep inside the tailpipe with a long 1.5-inch diameter nylon brush.



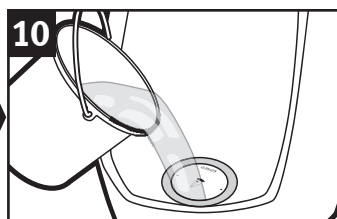
7 Flush housing with 5 gallons (20 litres) of hot soapy water.



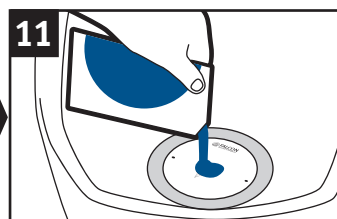
8 Wipe clean inner stainless steel rim.



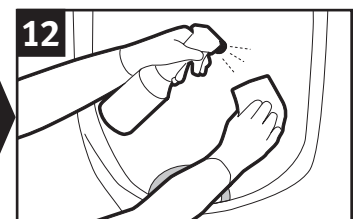
9 Insert new cartridge into housing and turn key to right to lock.



10 Slowly fill cartridge with 1 quart (1 litre) or more of clean water until there are no air bubbles.



11 Add blue sealant (allow time to drain into cartridge).



12 Spray (mist) Falcon-recommended\* cleaner and wipe clean.

\*Falcon-recommended cleaners: [www.falconwaterfree.com/literature](http://www.falconwaterfree.com/literature)